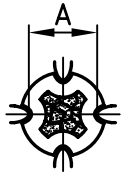
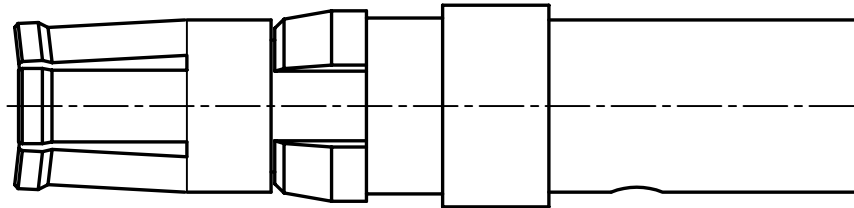
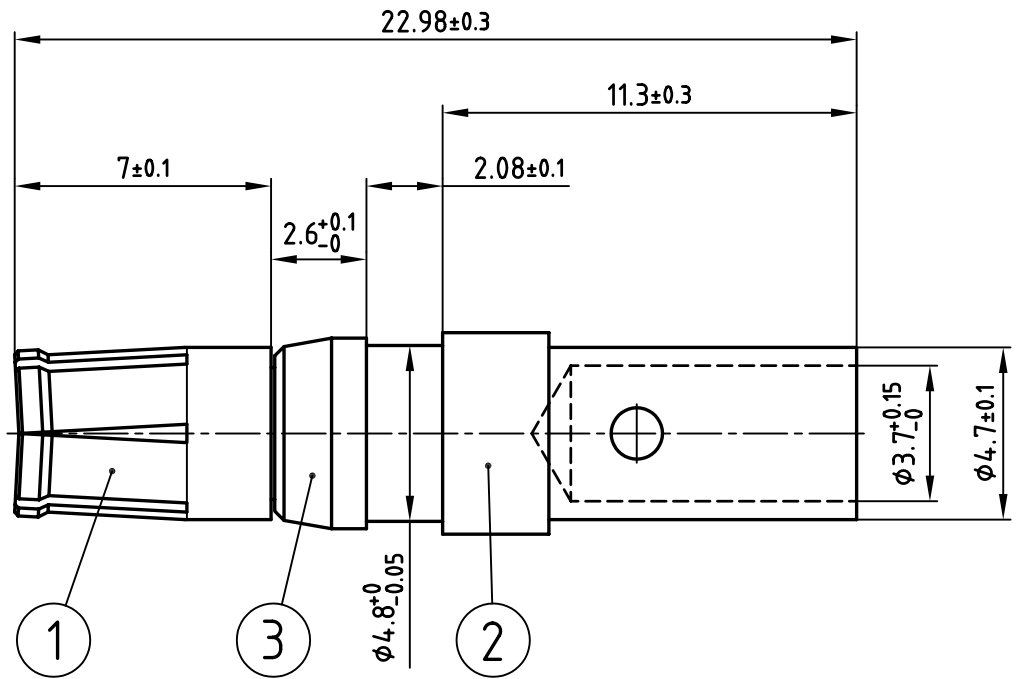


used for: D-SUB COMBINATION



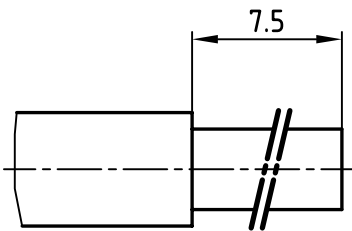
(c)

| Selector settings | Crimp height A |
|-------------------|----------------|
| 7 for AWG 10 | 2.19 - 2.41 |
| 6 for AWG 12 | 1.94 - 2.05 |



Directive 2002/95/EC
"RoHS"
Compliant

(b) STRIPPING DIMENSIONS



NOTES:

- MATERIAL: COPPER ALLOY
- PLATING:
ITEM 1: min. 30µ" HARD GOLD OVER min. 50µ" NICKEL
ITEM 2: min. 8µ" HARD GOLD OVER min. 50µ" NICKEL
ITEM 3: NICKEL PLATED
- CRIMPING: USE CRIMP TOOL 360X10409X WITH TOOL INSERT 360X20029X
SELECTOR SETTINGS: 7 FOR AWG 10; 6 FOR AWG 12

THIS DRAWING MAY NOT BE COPIED OR REPRODUCED IN ANY WAY, AND MAY NOT BE PASSED ON TO A THIRD PARTY WITHOUT WRITTEN PERMISSION.
OWNERSHIP AND COPYRIGHT OF CONEC GmbH
DO NOT ALTER CAD DRAWING BY HAND

| | | tolerance | | | |
|-------|-------------|------------|--------|--------------|--|
| 1998 | date | | | name | |
| drawn | 23.03. | | | Barcinski | |
| appd. | 23.03. | | | Mickenbecker | |
| norm | | | | | |
| d-old | | | | | |
| 1 x c | Ä 2197 | 01.04.2005 | Lehmen | | |
| 2 x b | Ä 2177 | 02.03.2005 | Lehmen | | |
| rev. | description | date | name | | |



| | |
|-----------|--|
| scale: | 5:1 |
| material: | SEE NOTES |
| title: | HIGH POWER CONTACT FEMALE CRIMP VERSION 30A D-SUB COMBINATION |
| dwg no: | AutoCAD/REL.13 DIN-A |
| | 4 |
| part no: | 132C11039X |
| | sh: 1/1 |